

# *Weddings & Elopements*

## Planning Guide



 *The Prairie Creek Inn*

Pure Luxury in the Heart of Nature!

[theprairiecreekinn.com](http://theprairiecreekinn.com) 403 844 2672

# Welcome to The Prairie Creek Inn!

The Prairie Creek Inn is an exclusive bed and breakfast country inn situated in the heart of West Central Alberta. Our romantic getaway is open year round and offers Canada Select 4.5 Star accommodations nestled in a breathtaking ecosystem of prairies, lakes, rivers, Boreal forests and the rolling foothills of the Rocky Mountains – the splendor of Alberta's West Country!

The Prairie Creek Inn features 9 luxury suites and an executive guest cottage, each with its own unique style, décor and personality, a casual fine dining restaurant, called Heartstone, and a professional meeting venue. The buildings are surrounded by towering spruce trees and 150 acres of beautiful, natural landscapes that are bordered on two sides by the popular Prairie Creek.

With our exquisite decor, scrumptious breakfasts and casually elegant dining, we have become a destination of choice in Central Alberta for those who prefer a quiet, luxurious, unspoiled country atmosphere to get away to.

We also specialize in hosting intimate gatherings of all kinds for up to 36 people. Whether you want to hold a wedding, family reunion, anniversary party or elopement, we provide the utmost in hospitality including first class event planning services to ensure groups are personally taken care of and receive all the attention and privacy they deserve.

Situated only 10 minutes south of Rocky Mountain House, we are easy to get to with a 2 hour drive from Calgary and Edmonton and 55 minutes from Red Deer, all on paved roads.

From the moment you arrive to days after you've left, you'll feel the special magic that abounds at The Prairie Creek Inn. Let us host your special gathering 'inn style!'

**The perfect getaway to enjoy the spirit of nature, the luxuries of life and the utmost in hospitality!**

## Table of Contents

- 4 Wedding Packages
- 6 Elopement Packages
- 7 The Deerview Room
- 8 Heartstone Restaurant
- 10 Floor Plans
- 11 Accomodations
- 14 Map and Directions
- 15 Contact Information

# *Small intimate* gatherings

## Weddings and Elopements

What can be more romantic than getting married at an exclusive country inn surrounded by towering trees, the vibrant energy of Prairie Creek and your closest family members and friends? The Prairie Creek Inn specializes in small, intimate destination weddings<sup>(1)</sup> where you can rent the entire facility and have a casually elegant affair that will be highly personal, memorable and magical.

You can say your vows in style with a cozy indoor wedding ceremony in our Deerview Room and or you can choose an outdoor service beside Prairie Creek with its ever flowing energy serenading your affair. After pictures and perhaps a celebratory champagne reception, you can reserve the entire Heartstone Restaurant where your group can dine in style overlooking Prairie Creek and the grounds, be warmed by the glowing fireplace and relax on the expansive outdoor deck.

Elopements can take place in the Great Room of our Inn in front of its expansive fieldstone fireplace or you can rent the Deerview Room for a more private ceremony or get married on the grounds of the Inn in your choice of spots. The Heartstone Restaurant can accommodate a maximum of 36 people for a wedding or reception. A minimum of 20 people is required its exclusive use.

Our luxurious West Country Suite with its king size four poster bed, fireplace, double Whirlpool tub and steam shower is perfect for your wedding night and honeymoon. Our Creekside Cottage and eight other suites can accommodate up to 20 of your guests (double occupancy) plus there are a number of hotels and bed and breakfasts within a 15 minute drive that the other members of your group can stay at.

We also have two fire pit areas so you can incorporate a fun and lively sing-a-long around the campfire, share blissful wedding tales or even have an informal hotdog or marshmallow roast. A close and personal wedding at its best!

<sup>(1)</sup> Destination weddings started in the late 1980s as a way to have an intimate wedding-vacation experience at exotic resorts and include the couple's closest friends and family members. Many times guests pay their own hotel and transportation costs making it a more personal, cost effective way to get married.

## Wedding Packages

In summer, winter, spring or fall, let us help you plan a romantic, stress-free destination wedding that will delight you and your guests. We have a number of wedding packages for your consideration....

### The wedding packages include:

- Rental of all 10 guest rooms including a complementary full hot breakfast
- A free Honeymoon Suite for the bride and groom
- Rental of function rooms and/or grounds for ceremony
- Marriage Commissioner
- Four course gourmet wedding dinner with wine
- Champagne reception including hors d'oeuvres and champagne
- White table linens, tea lights, and cut flowers for the table
- Box lunches (for a 2 day Wedding Package)
- Set up services and professional serving staff including bartender
- Wedding cake

For all packages you will be responsible for your own flowers (bouquets and boutonnieres and large flower arrangements, arches, etc.), photographer, musicians, salon/spa services and special decorations you may require. We are happy to provide referrals for these services. A 25% deposit is required for all group bookings. Balance is due 30 days prior to the event. Package prices do not include GST, gratuities and room taxes (4% Alberta Tourism Levy)

### 1 Night Wedding Package

Short, sweet and sensational....

#### Day 1

Check in and get ready for the ceremony	4 to 5 pm
Wedding ceremony on grounds or in the Deerview Room	5 pm
Pictures	Following
Champagne reception with hors' d'oeuvres	6 to 7 pm
Formal dinner in the Heartstone Restaurant	7 to 9 pm
Cake cutting ceremony, gift opening and celebration party	Following until 11pm

#### Day 2

Complimentary breakfast served in Heartstone Restaurant	9:30 to 10:30 pm
Time to relax, visit or explore the grounds	Remainder of morning
All guests check out	By noon

Cost	36 guests	30 guests	20 guests
	\$5,600	\$4,900	\$4,300
	\$3,800 *	\$3,100 *	\$2,500 *

\* If guests pay for their own rooms  
Our one night wedding package is only available from Sunday to Thursday.

## 2 Night Weekend Wedding Package

A weekend wedding getaway to remember....

### Friday:

Check in	4 to 6 pm
Informal cocktail or social gathering in the Great Room	5:30 to 6:30 pm
Casual dinner in the Heartstone Restaurant *	6:30 to 8:30 pm
Finalize set up arrangements in the Deerview Room	Until 10 pm

### Saturday:

Complimentary breakfast served in Heartstone Restaurant	9 to 10 pm
Hair salon, makeup or spa appointments**	Morning
Box lunches for overnight guests	Lunch time
Guests get ready for the ceremony	Early afternoon
Wedding ceremony on grounds or in the Deerview Room	Mid afternoon
Pictures	Following
Champagne reception with hors' d'oeuvres in Great Room	5:30 to 6:30 pm
Formal dinner in the Heartstone Restaurant	6:30 to 8:30 pm
Cake cutting, gift opening and celebration party	Following until 11pm

### Sunday:

Complimentary breakfast served in Heartstone Restaurant	9:30 to 10:30 pm
Time to relax, visit or explore the grounds	Remainder of morning
All guests check out	By noon

<b>Cost</b>	36 guests	30 guests	20 guests
	\$7,700	\$7,000	\$6,300
	\$4,100 ***	\$3,400 ***	\$2,700 ***

\* Guests pay for their own dinner  
 \*\* Cost not included in package  
 \*\*\* Cost if guests pay for their own rooms.

## Sunday Afternoon Wedding Package

A delightful afternoon celebration and dinner....

Bride and groom check into the West Country Suite	3 pm
Guests arrive	3:30 pm
Wedding ceremony in the Deerview Room or on the grounds	4 pm
Pictures	Following
Champagne reception with hors' d'oeuvres	5 to 6 pm
Formal dinner, cake cutting and celebration in the Heartstone	6 to 9 pm
Guests leave	By 9 pm
Bride and groom retire to the West Country Suite	For the evening
Complimentary breakfast delivered to your room	By 10 am next day

<b>Cost</b>	36 guests	30 guests	20 guests
	\$3,900	\$3,100	\$2,300

# Elopement Packages

Looking for something a little more simple, intimate and private?

## Elopement Package

Private, romantic and affordable....

- Intimate wedding ceremony of up to 1 hour in your choice of setting:
  - The Great Room of the Inn
  - The Deerview Meeting Room
  - Beside Prairie Creek or on the grounds (weather permitting)
- Marriage Commissioner to officiate a personalized wedding ceremony
- 2 nights stay in the luxurious and romantic West Country Suite
- Champagne and chocolate covered strawberries for wedding toast
- Hand-tied bridal bouquet for the bride with matching boutonniere for the groom
- Photos taken by innkeepers or a referral to a professional photographer
- Romantic 4 course dinner for 2 in Heartstone Restaurant including wedding cake
- Innkeepers will stand in as witnesses or you can bring your own
- Complimentary full hot breakfast delivered to your room

Cost	2 nights	1 night *
	\$900	\$645

Does not includes GST, Alberta Tourism levy 4% and gratuities  
\$80 each additional guest (up to 6 persons including bride & groom)  
\* A 1 night stay is available with Sunday thru Thursday weddings only



# *An ideal* gathering spot

## Deerview Room

Our Deerview Room is a warm, cozy space that features a fieldstone fireplace, window seat, and ample lighting and windows. In addition to corporate meetings, the room can accommodate wedding ceremonies of up to 36 people. Couples enjoy saying their vows in front of the fieldstone fireplace with their guests sitting in rows of comfortable chairs behind them. This ground level room has a view of Prairie Creek and features French doors that open onto a large outdoor patio and the Inn's expansive lawn.

### Deerview Room features:

- Comfortable leather executive chairs
- Large boardroom tables
- Free WiFi
- Two window benches
- Fieldstone gas fireplace
- Projector & screen (70"x70")
- iPod dock & speakers
- Refreshment service area
- Outdoor patio with seating
- Private, warm, tasteful décor

### Room Size

535 sq. ft. 20' x 27.5' Ceiling height: 9'

### Seating/Capacity

Boardroom	16 people
Classroom	20 people
U-shaped	16 people
Theatre	36 people
Standing	40 people

**Rental period** 8 am to 11pm



# *Relaxed* gourmet dining

## Heartstone Restaurant

At the culinary heart of The Prairie Creek Inn is Heartstone, a new casually elegant restaurant where overnight guests are served their complimentary full hot breakfast each morning and where a special gourmet dining experience is offered in the evenings.

Located above the Deerview Meeting Room, the restaurant handles all the catering and liquor services for weddings and group gatherings. Dine in style overlooking Prairie Creek and the grounds of the Inn, be warmed by the glowing fireplace and relax while you have a special gourmet "West Country" dining experience.

Private functions exceeding 20 people can rent the entire restaurant for a wedding, special dinner or a luncheon. Maximum capacity is 36 people for a sit down meal or 50 people for a stand up affair.

Heartstone has an iPod docking station for special music and the tables can be moved to the side to make room for a small dance floor or to accommodate musicians.

### Room Size

700 sq. ft. 20' x 37' Ceiling height: 10'-15'

### Seating/Capacity

Banquet 36 people  
Standing 50 people



# Food & Liquor Services

## Creative, Delectable and Robust

Our Heartstone Restaurant features an ever changing menu of specially prepared gourmet dishes created with the finest fresh and locally grown produce and meats available. We offer vegetarian entrees and can accommodate any special dietary restrictions requested with ample notice.

We offer a full bar menu with the finest wines and beverages to compliment our menu. They include premium wines by the bottle or glass, domestic and imported beers, premium highballs and cocktails, martinis and pop and juices. Group events have a choice between an open bar where the host pays for the drinks or a cash bar where individuals pay for their own drinks.

### **A sample of our menus include:**

**Coffee and Refreshment Breaks** from \$5.00 per person

Freshly brewed coffee and tea  
Assorted drinks – juices, soft drinks, mineral water  
Basket of freshly baked muffins, cookies or pastries  
Fresh fruit and cheese plate

**Lunch** from \$20.00 per person

Soup of the day  
Seasonal greens with house vinaigrette  
Assorted sandwich or wrap tray  
Pickle tray  
Dessert: Fruit, squares, cake or pie  
Iced Tea and/or Soft Drinks

**Breakfast** included in room charge

Our breakfast menu changes daily. It includes coffee/tea, juice, a fresh fruit starter with yogurt, muffins or other baked goods and a hot main entrée. Some of our entrées include:

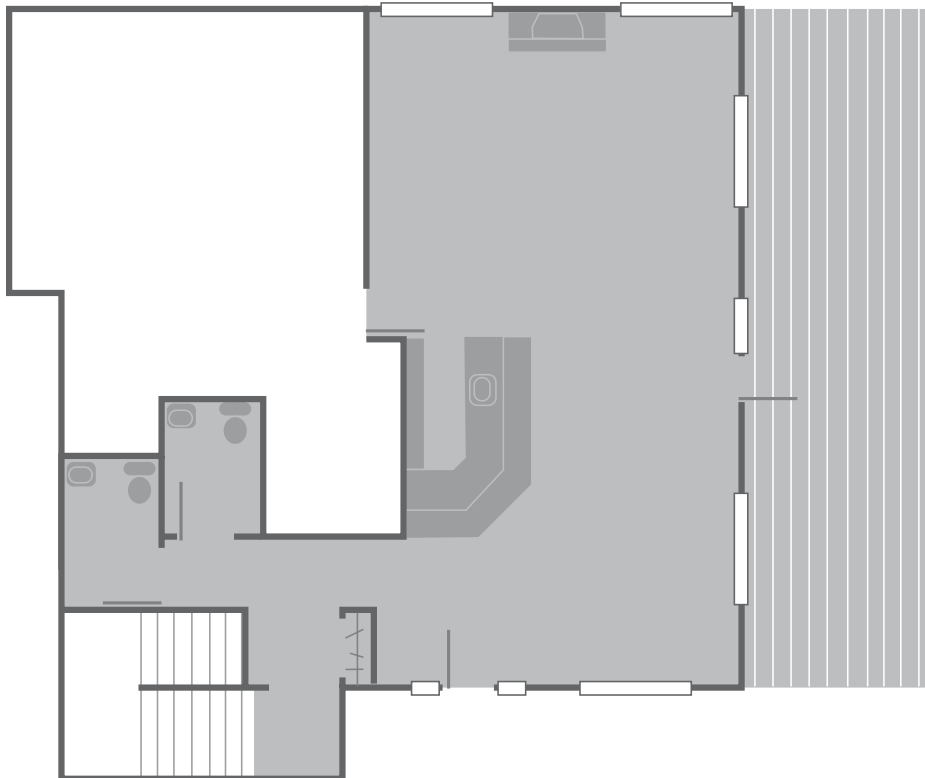
Eggs Benedict  
Stuffed Blueberry French Toast  
Eggs Burritos  
Four cheese Soufflé with Green Chilis  
Cheesy Mushroom, tomato and Bacon Filled Omelets  
Blueberry or Fluffy Lemon Ricotta Pancakes  
Bacon, Ham or Sausages

**Four Course Wedding Dinner** from \$50 per person

- Beginnings: Sweet Potato and Leek Soup with Canadian Maple Syrup and Chives  
Dinner rolls & butter
- Intermediate: Mixed Baby Greens with Mandarin Oranges, Dried Cranberries,  
Toasted Pecans, Sweet Red Onion and Feta Cheese with Saskatoon  
Berry Vinaigrette
- Entrée: Seared Beef Tenderloin 'Oscar' topped with Snow Crab and  
Béarnaise Sauce, Asparagus and Potatoes Dauphinoise
- Finishings New York Style Cheesecake with Mixed Berry Coulis and Dark  
Chocolate Shavings

These are only examples of what our chef can prepare for you. We prefer to be inspired and design a custom menu for your special function taking your preferences into consideration and any dietary restrictions your group may have. Let our chef cater to you and design a memorable dining experience that will delight your group. Please ask for a personal consultation today.....

## Floor Plans



### Heartstone Restaurant

#### Room Size

700 sq. ft. 20' x 37'  
Ceiling height: 10'-15'

#### Seating/Capacity

Banquet 36 people  
Standing 50 people

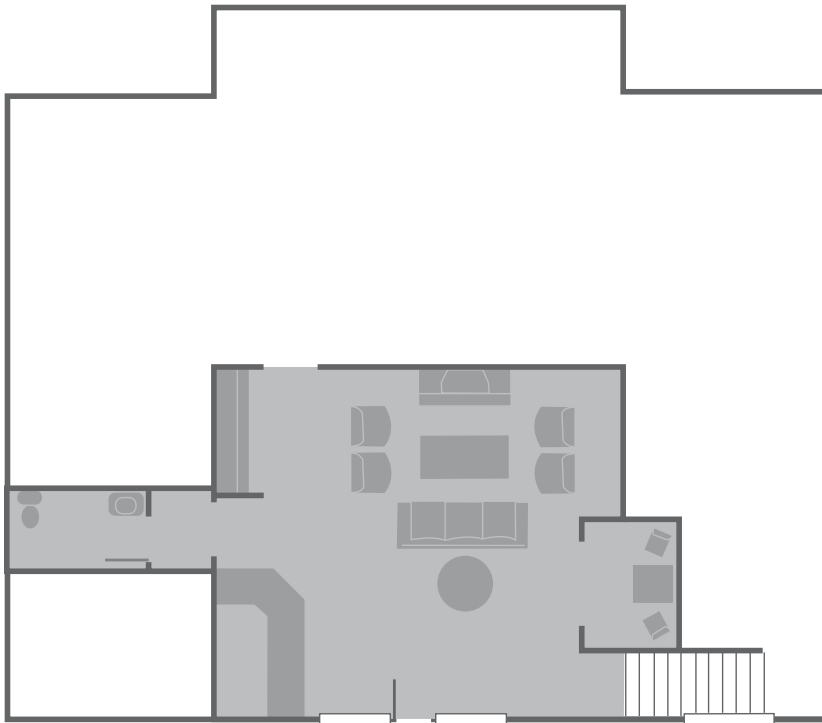
## Deerview Room

### Room Size

535 sq. ft. 20' x 27.5'  
Ceiling height: 9'

### Seating/Capacity

Boardroom	16 people
Classroom	20 people
U-shaped	16 people
Theatre	36 people
Standing	40 people



## Main Inn Reception Room

### Room Size

638 sq. ft. 29' x 22'  
Ceiling height: 10'-15'

### Seating/Capacity

Standing 20 people

# Casual elegance at its best!

## Accommodations

You will truly feel pampered in the spacious well-appointed 4.5 star accommodations at The Prairie Creek Inn. They include an executive guest cottage and 9 luxury suites, 2 in the Coach House and 7 in the new Inn opened fall 2010.

Offering an exciting experience of its own, each room is uniquely designer decorated with down duvets and luxury linens and features a number of "special touches" such as cozy bathrobes, throws, artwork and attractive accessories. All suites have fireplaces, roomy sitting areas, double soaker tubs, walkout decks or patios, and all the comforts and luxuries of home. The Coach House and Creekside Cottage are only a short stroll from the main Inn and the Heartstone Restaurant and Deerview Meeting Room are next door.

A 25% deposit is required for group room bookings. Room rates from \$180 to \$220 per night plus taxes.

Our Creekside Cottage and Explorer's Suite are pet friendly. An extra fee of \$25/day applies.



Woodlands Suite

## Guest room amenities:

- Gas fireplace (Creekside Cottage has a wood burning fireplace)
- Outdoor decks or patios
- Deep soaker tubs (7 rooms have double soaker tubs)
- Whirlpool tub in the West Country Suite
- Cozy sitting areas with two chairs
- Feather duvets & pillows, and rich linens
- 32" LED flat screen satellite TV and DVD
- Complimentary WiFi
- Clock radio with IPOD docking station
- Bar fridge
- Complimentary coffee or tea
- An iron, ironing board, hairdryer and luggage racks
- Luxurious bath robes and towels
- Aveda soap and bath toiletries
- Unique decorating, artwork and books
- Writing or working desk

Check in: 4 to 6 pm

Check out: 12 Noon

Occupancy: 22 people (double)  
12 people (single)

The inn is completely smoke free  
inside and out!

# Room Descriptions

## In Our Main Inn

### West Country Suite

For an ultimate West Country getaway, this outstanding 500 sq. ft. suite is our largest luxury romance room with a king size four poster bed, in-room double Whirlpool bathtub, large steam shower, double vanity with vessel sinks, fieldstone gas fireplace, vaulted ceilings and a large private balcony with a view of the creek.

### Home on the Range Suite

Shower lovers will adore the huge walk-in double shower in this upscale western inspired suite. It features a king bed with leather headboard, double vanity with granite vessel sinks, gas fireplace and a private deck. (Note: There is no bathtub in the large ensuite but you might get lost in the shower)

### Canadiana Suite

Decorated in true eclectic Canadiana style, this bright, lovely room has a queen bed, fireplace, oversized single soaker tub/shower and a private balcony with a view of the creek.



West Country Suite Whirlpool Tub

### Brown Trout Suite

Contemporary meets nature in this lovely deluxe ground level suite that is inspired by the main habitants of Prairie Creek. It features a king bed, double soaker tub, large walk-in shower, gas fireplace and private walk-out patio.

### Woodlands Suite

Inspired by 'all things wood', you'll immerse yourself in nature in this deluxe king suite with a double soaker tub, corner shower, gas fireplace and private walk-out patio.

### Golden Meadows Suite

Emmerse yourself in the rolling meadows of Alberta's landscape in this warm and luscious room featuring a king bed, double corner soaker tub with separate shower, double vanity, gas fireplace and private walk-out patio.

### Bird's Nest Suite

Named in honour of the home of its first guest (a Robin's nest on the patio), this spacious suite on the walk out level will wow you with its queen bed and draping canopy headboard, gas fireplace, oversized single soaker tub/shower and private walk out patio.



Canadiana Suite

## In our Coach House

### **Stables Suite**

Named after the horses that roamed the property, this beautiful romantic room features a king size canopy bed with a double soaker tub next to it, a fireplace, private entrance and a large bathroom with a huge walk-in shower. Fully adapted for guests in wheelchairs or with special needs.

### **Explorer's Suite**

With a touch of history, this suite has a queen log bed, fireplace, private entrance, Canadiana antiques, Hudson's Bay blankets and a large ensuite with a granite vessel sink and large double soaker tub.



TOP TO BOTTOM: Stables Suite in room soaker tub.  
Brown Trout Suite.

### **Creekside Cottage**

This lovely self contained executive guest cottage is just steps from Prairie Creek and only a short stroll from the main Inn. It is richly decorated with warm western décor, antiques and designer details and features two bedrooms that sleep up to four people, a wood-burning fireplace, a fully equipped kitchen with dishwasher, a gas barbeque, a soaker tub and a large covered front deck with Adirondack chairs.



Exterior of the Creekside Cottage.

# *We're* easy to get to...

## Map and Directions

GPS coordinates: N 52.14.284; W 114.56.538

Municipal Address: 73042 TWP Rd 38-0

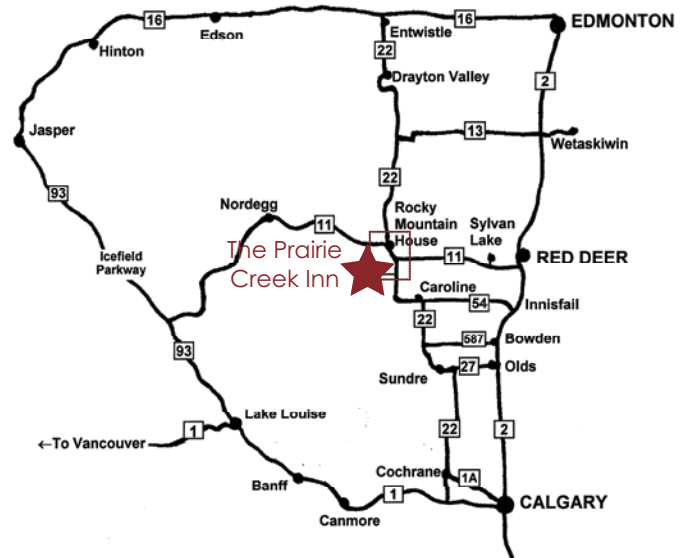
Legal Address: SW 4-38-7-W5

**From Edmonton:** Hwy #2 or #22 south to Rocky Mountain House. From Hwy #11 take Hwy #22 south for 11 km to Prairie Creek Road. You will see our blue sign, a yellow sign that says "Logs may swing...", and a sign to Mitchell Lake. Turn right and go 5 km west. Go past Everdell Rd and cross Prairie Creek Bridge. We are the first driveway on the right after the bridge before you go up the hill - 1 km from Everdell Rd.

**From Calgary:** Hwy #22 or #2 north to Caroline. Go past Caroline to Clearwater Trading Store. Turn right (north) for 15 km to Prairie Creek Road. Turn left and go 5 km west. Go past Everdell Rd and cross Prairie Creek Bridge. We are the first driveway on the right after the bridge just before you go up the hill - 1 km from Everdell Rd.

**From Red Deer:** From Hwy #2, take Hwy #11 west towards Rocky Mountain House. Before you reach Rocky, take Hwy #22 south for 11 km to Prairie Creek Road. Turn right and go 5 km west. Go past Everdell Road and cross Prairie Creek Bridge. We are the first driveway on the right after the bridge just before you go up the hill - 1 km from Everdell Rd.

**From Rocky Mountain House:** Head east out of town on Hwy #11. Turn right on Connection Hwy 752 (1 km past Tim Hortons on the east side of town). Turn left (south) at Hwy 752 and left again at Everdell Rd (an odd intersection). Go 11 km south to the end of Everdell Rd. Turn right (west) on Prairie Creek Rd (see Qually's Corner signs). We are the first driveway on the right after Prairie Creek Bridge just before you go up the hill - 1 km from Everdell Rd.



*We'd love to have you visit!*

## Contact information

For further information or to book your next event, please contact our Event Coordinator:

Terri Cameron  
403 844 2672  
theprairiecreekinn@telus.net  
Box 22, Site 12, RR 2  
Rocky Mountain House  
Alberta Canada T4T 2A2

**Please visit our website  
for further information:  
[www.theprairiecreekinn.com](http://www.theprairiecreekinn.com)**



Prairie Creek